

# Carriage Mounted Big Bag Tines

The safe solution for handling "big bags".



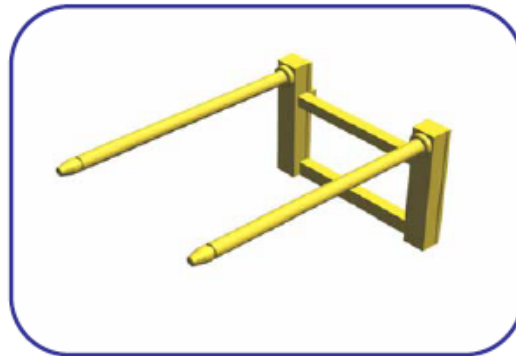
## Use :-

Designed for handling standard "big-bags", this carriage mounted attachment gives increased lift height, the tines being set at the top of the carriage plate. The bags are picked up by pushing a tine through the loops on each corner of the bag.

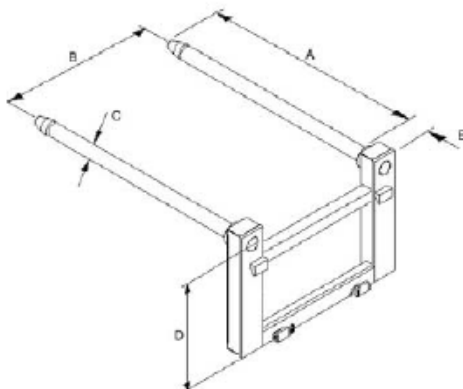
## Ordering Information :-

- Truck Capacity?
- Carriage Class?
- Bag type & size?
- Bag weight?

Model Ref.	Weight	LLC	C of G
CBBT-1	150 kg	80 mm	300 mm
CBBT-2	155 kg	80 mm	250 mm



Model Ref.	Capacity	Carriage Class	A' Pole Length	B' Pole Spread Centers	C' Pole Diameter	D' Pole Center form carriage
CBBT-1	1000 kg	2	1220 mm	830 mm	70 mm	547 mm
CBBT-2	1000 kg	3	1220 mm	830 mm	70 mm	547 mm



## Operation :-

With the lower hangers removed and the poles resting on a raised surface, drive the fork truck slowly forwards until the top of the truck carriage plate contacts the backplate of the attachment just below the top hangers. Carefully raise the mast until the centralising lug on the attachment drops into the central castellation on the carriage plate and the top hangers fit snugly on the top of the carriage rail. The bottom hangers must then be bolted in position through the holes provided.

## **HoistQuip Ltd**

Cartmel Drive  
 Harlescott Industrial Estate  
 Shrewsbury  
 Shropshire  
 England  
 T 01743 446666  
 F 01743 442448  
 enquiries@hoistquip.co.uk  
**www.hoistquip.co.uk**